



ROLLING DOORS

Aluminum

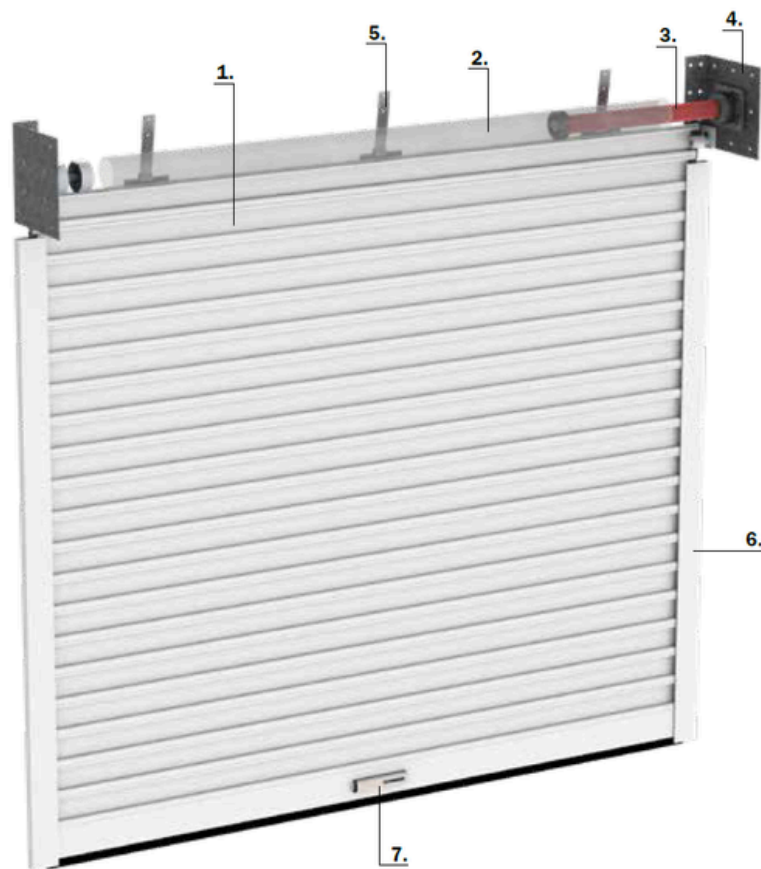
WWW.SUNONBLINDS.COM



Rolling doors

Parts of a door

- 1.Lock: Set of slats that form the main part of the door.
- 2.Shaft: Element on which the lock is wound and which serves as a transmitter of the motor's movement.
- 3.Motor: Automatic drive of the rolling door. Depending on the needs, a tubular motor or a central shaft is chosen.
- 4.Lateral supports: Door fastening system. Available in aluminum and iron, according to needs.
- 5.Tie rods: The element that connects the lock to the shaft and allows it to roll on itself.
- 6.Guides: Essential elements for the correct operation of the lock.
- 7.Security: Obstacle detection system, which works by vibration. The security system installed in the finish will cause the door to stop when a body or person contacts both its upward and downward movement.



Rolling doors

Installation type

Sunon rolling doors adapt to any need, whether for private homes or businesses. For this reason, we have two different types of installation: on-site installation and box installation.



Installation on site

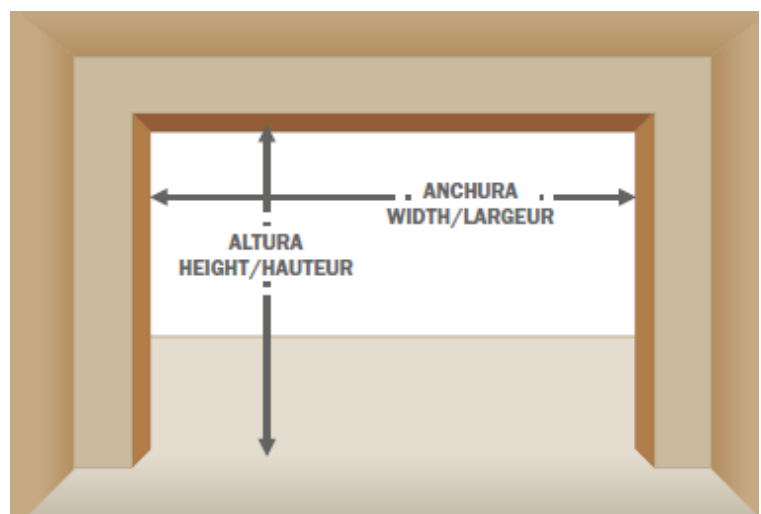
The most traditional option for installing a rolling door. It has a large rolling capacity so we can achieve more height. Recommended in situations with a false ceiling.

Installation with box

The installation of a roller door with a box provides a significant reduction in visual impact, as well as less noise when operating the door. It also offers greater protection against dirt (when it is folded).

Measurement methods

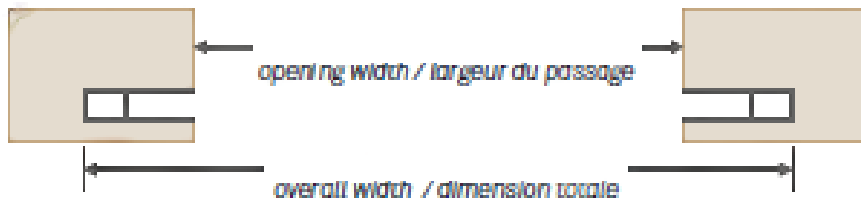
Measuring a door is simple if you know a series of basic guidelines for doing so. Below we show you a guide to be on the safe side when taking measurements.



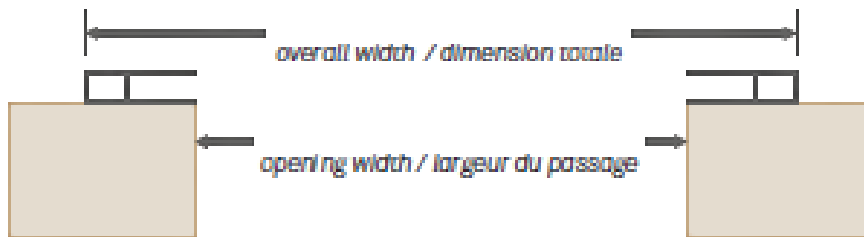
Rolling doors

Horizontal measurement (door width)

When the guides go inside (recessed) the wall.



When the guides overlap the wall and are on the outside.

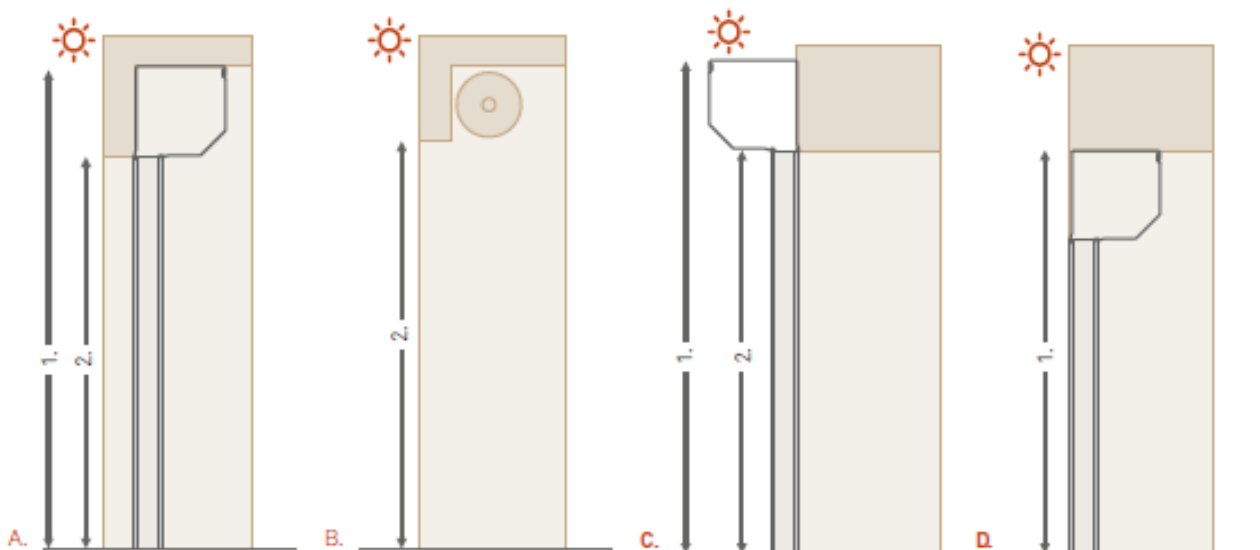


When the guides are inside the light gap (reducing the size to the final gap).



Vertical measurement (door height)

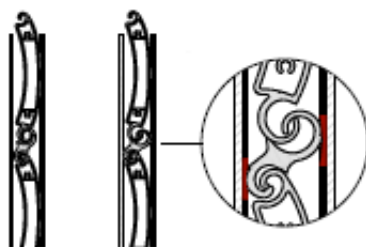
1. Overall size 2. Light size



Rolling doors

Self-locking doors

The Block rolling door system is the perfect solution when a high level of security is required, such as in jewelry stores, banks, ground floor homes, etc. It provides a high level of security thanks to the system of intermediate rods that exert pressure on the guides. This action makes it difficult to lift the door vertically from the outside and therefore access to the interior of the home or business.



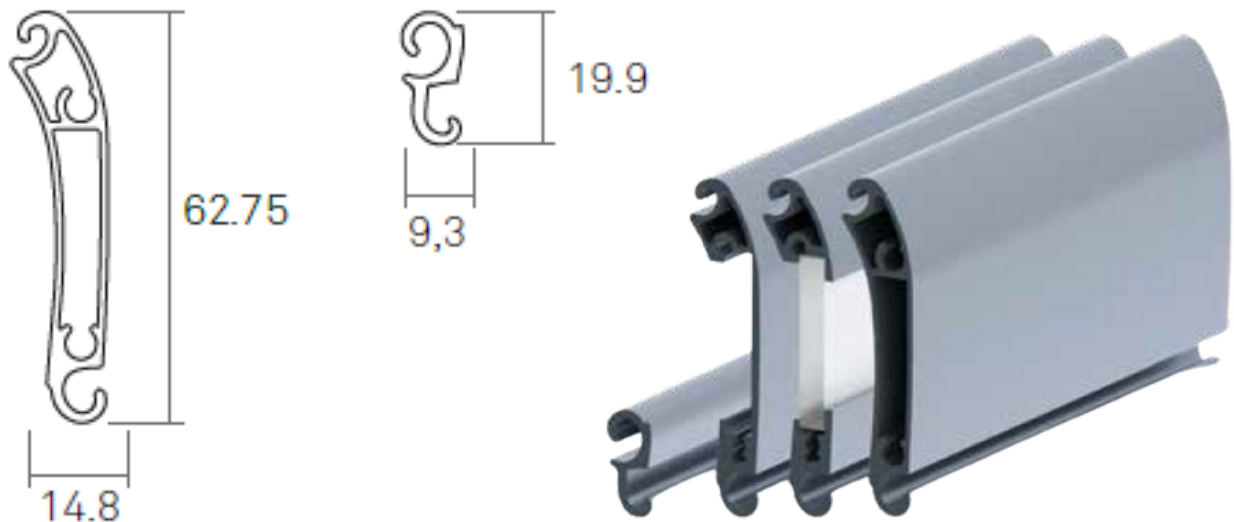
- **Double-walled extruded slat with self-locking intermediate profile.**
- **Also available in stamped and stamped with methacrylate versions to give more light to the interior.**
- **The Block R 100 model is one of the few models on the market that, in addition to being self-locking, can be micro-perforated or die-cut.**

Rolling doors

Self-locking models

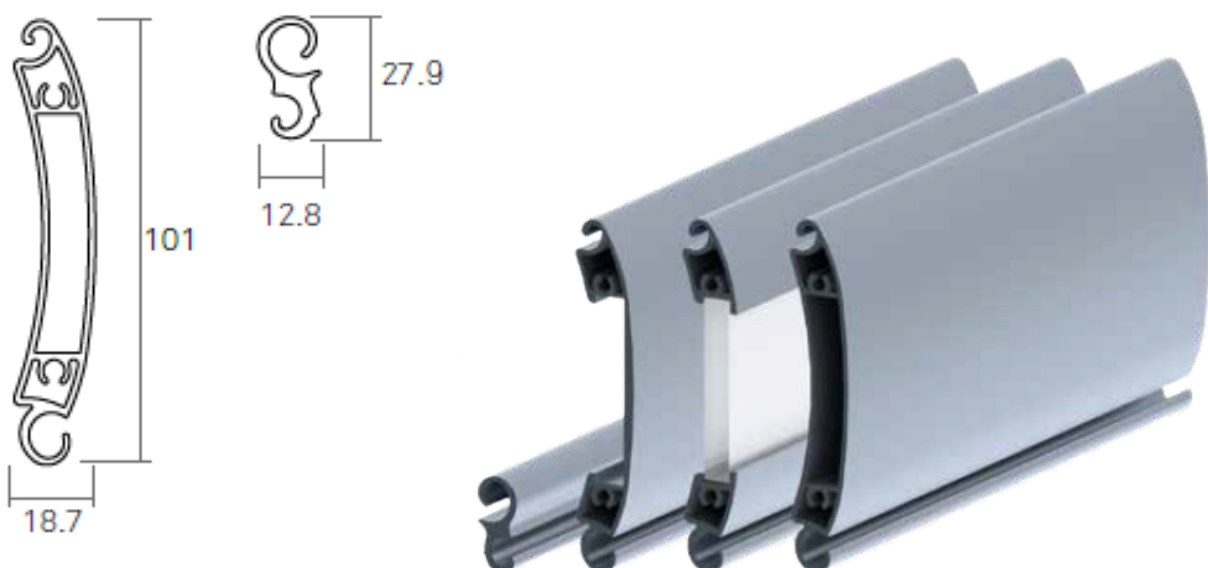
BLOCK 60 SINGLE / DOUBLE WALL

A standard in security. Recommended for homes, garages and commercial premises that require security. It also has a "single-wall" version that can be stamped and methacrylate installed.



BLOCK 95 SINGLE/DOUBLE WALL

The lamella reigns supreme in safety. It is especially recommended for businesses that require extra security, such as pharmacies or jewelry stores. It also has a "single-wall" version that can be stamped and methacrylate placed.

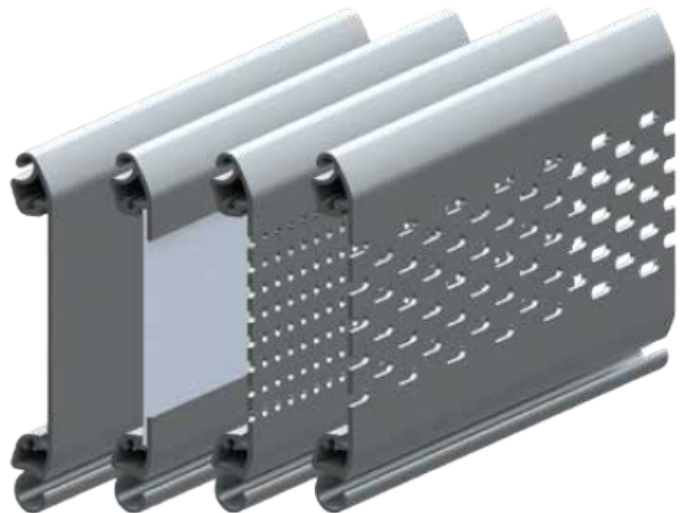
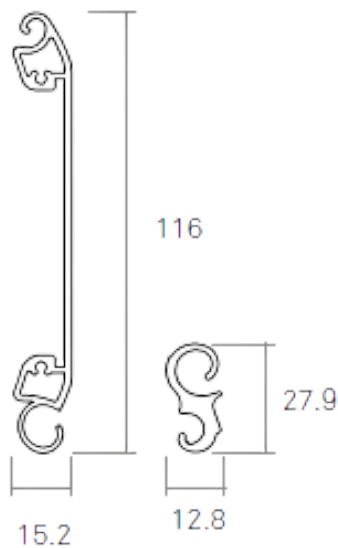


Rolling doors

Self-locking models

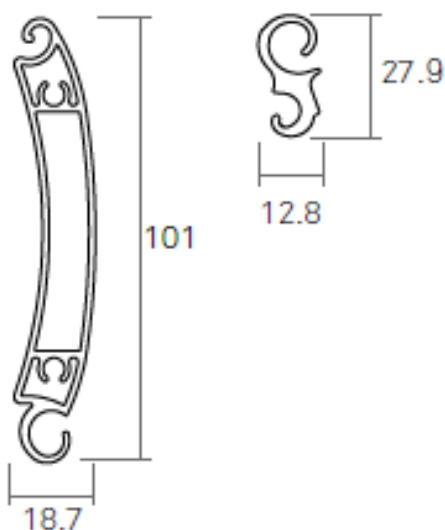
BLOCK R 100 SINGLE-WALLED

The Block R 100 slat has the advantages of self-locking slats, being optimal where high security is required. It is also ideal for large surfaces that need more light. This slat has the advantage of being flat, giving a very attractive aesthetic touch, allowing it to be stamped and micro-perforated.



BLOCK 100 SINGLE/DOUBLE WALL

The lamella reigns supreme in safety. It is especially recommended for businesses that require extra security, such as pharmacies or jewelry stores. It also has a "single-wall" version that can be stamped and methacrylate placed.



Rolling doors

Extruded Aluminum Doors

Its micro-perforated version is recommended when looking for interior ventilation.

The stamped version is especially aimed at shop windows that want to provide good visibility of the interior while ensuring the safety of the premises.

Sunon's extruded aluminum rolling doors adapt to any need, offering sizes ranging from 60 mm in height per slat to 100 mm, which makes this range the most versatile.

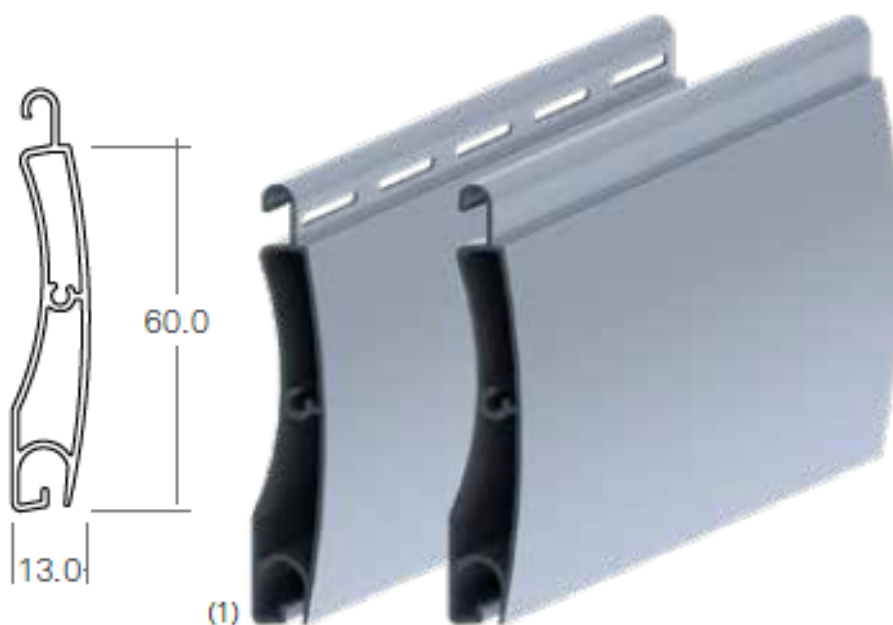
- **Recommended for shops, garages and homes.**
- **Possibility of micro-perforation, stamping and stamping with methacrylate.**

Rolling doors

Extrusion models

DELTA DOUBLE WALL

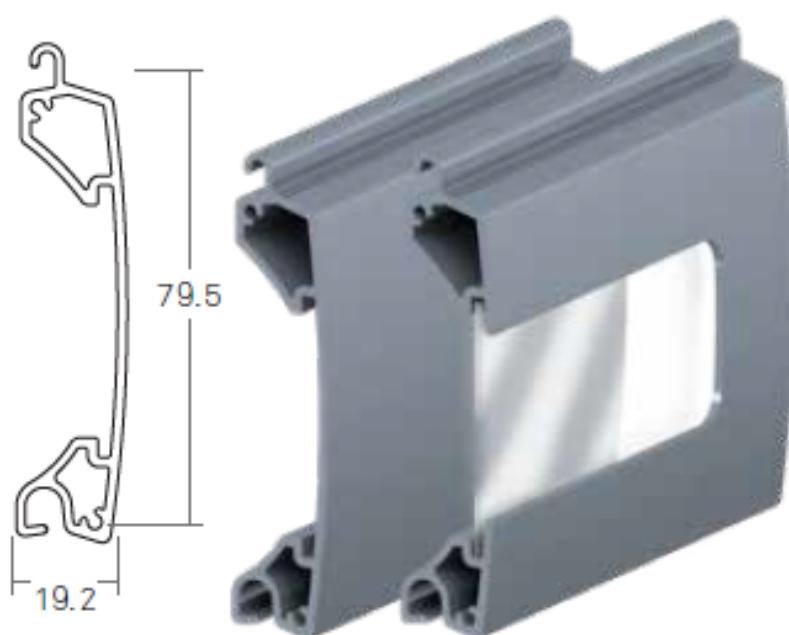
Double-walled extrusion slat widely used in garages and homes. The design of this slat allows us to roll it up optimally.



*Sunon does not guarantee total darkness when the blind is lowered.

BASIC DOOR A77 SINGLE-WALLED

A classic in the Sunon catalog. A board mainly suitable for commercial premises. As it is a "single-wall" board, it can be stamped.

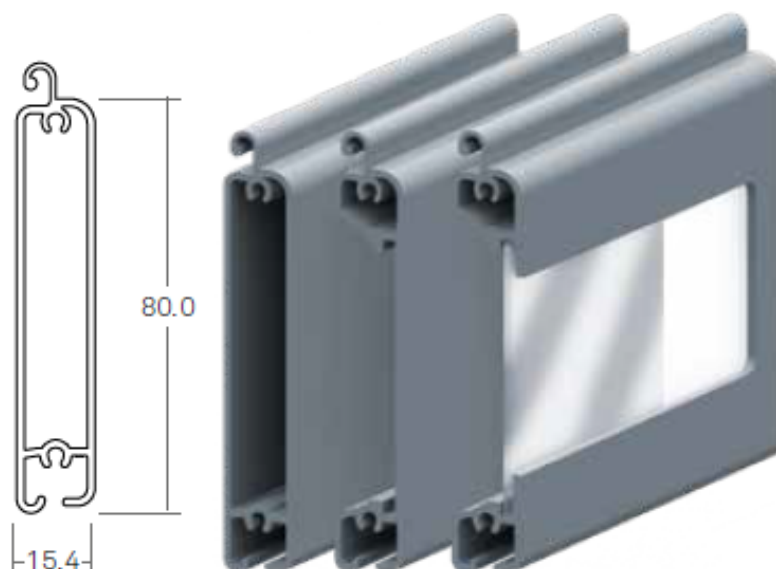


Rolling doors

Extrusion models

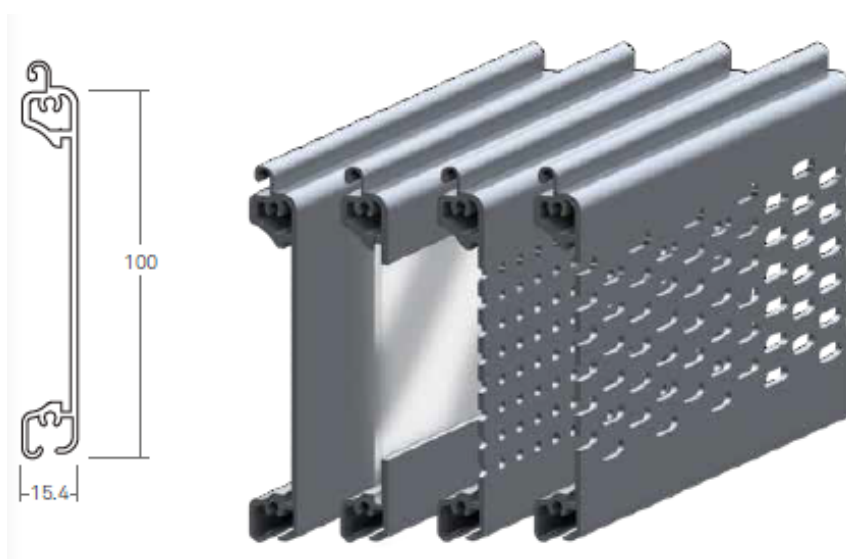
MAXI 80 SINGLE/DOUBLE WALL

Straight aluminum slat with a formal and attractive character. Its combination with the "single-wall" version allows us to emboss it and emboss it with methacrylate to give more visibility to the interior.



BASIC DOOR ALU 100 SINGLE-WALLED

With this model you can achieve large dimensions. A straight and sober slat that allows us the following models: blind, micro-perforated, stamped and stamped with methacrylate.

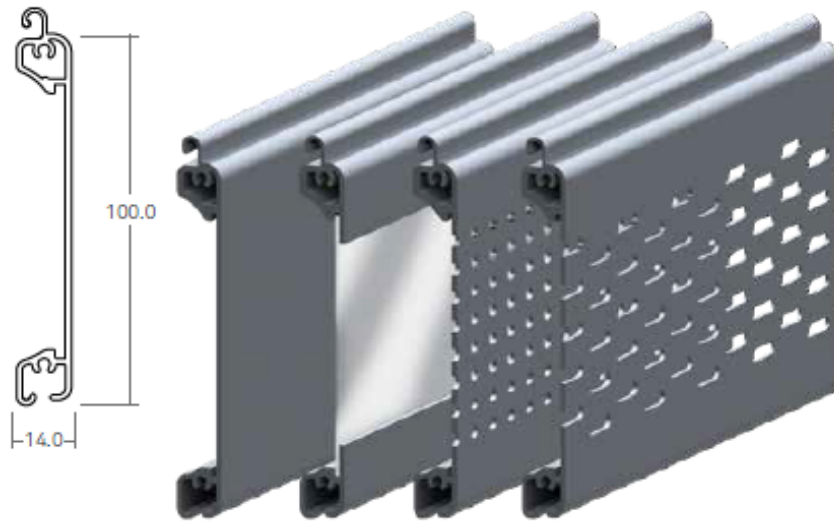


Rolling doors

Extrusion models

XR 100 SINGLE-WALLED

The most commonly used slat model in commercial premises due to its features. It is ideal for replacing old galvanized shutters, without any work and accompanied by our guide. Available in blind, micro-perforated, stamped and stamped with methacrylate versions.



Rolling doors

Profiled Aluminum Doors

Because safety is not always the priority, Sunon has its VD-77 slat model.

Made of profiled aluminum and high-density polyurethane, the VD-77 PF slat offers acoustic and thermal insulation for your business or garage on the inside. All this at an affordable price adapted to customers who need a basic closure.

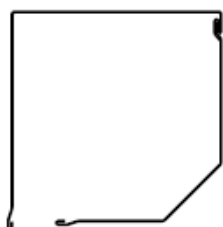
This model can be combined with the VD-77 SINGLE-WALLED.



- It provides acoustic and thermal insulation.

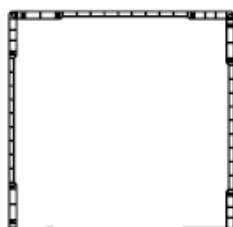
Drawers for doors

The boxes for rolling doors provide the whole with greater protection against dirt. In addition, they reduce the acoustic impact of the door during opening and closing maneuvers. We have three models that adapt to any need.



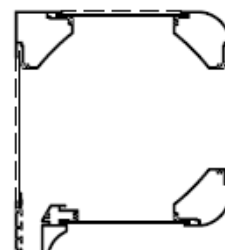
45° profiled aluminum box

Profiled aluminum boxes have a wide range of sizes that adapt to any need and also have a complete range of colors with the possibility of total integration with the carpentry, achieving uniformity in your home.



PVC box

The new PVC box is especially suitable for homes that are looking for high thermal and acoustic insulation. Box that can be registered on its front, especially suitable for installation on woodwork. The possibility of polyespan gives it greater thermal and acoustic insulation.



Extruded aluminum box

Resistant, robust and with a great design, especially suitable for outdoor installations where the drawer is visible.

Having all the components in extruded aluminum, it allows the color and tone of the lacquer to be matched between the drawer, guides and lock.

Rolling doors

Endurance safety system

Our Endurance security system is especially suitable for areas where extra security is required due to the high rate of theft or extreme climates, resisting hurricane winds of more than 300 km/h. Compatible with Block 60, Block 95, Delta and Basic Door Alu 100 slats, the Endurance system consists of a special stopper and guide that provide extra resistance and security to the entire door assembly.

- **Extreme security, the Block 60 and Block 95 system is also self-locking.**
- **Capable of withstanding winds of more than 300 km/h (Block 60).**
- **Reduction of the amount to be paid for your invoice in the insurance of the house or building.**

