



MAXIMUM SECURITY
BULLETPROOF ARMOR FOR
ROLLER HUTTERS WITH WK
CERTIFICATES

CUSTODIA BASIC 6500

WWW.SUNONBLINDS.COM

SUNON. SPACE | LIGHT | SHADE

HIGH SECURITY

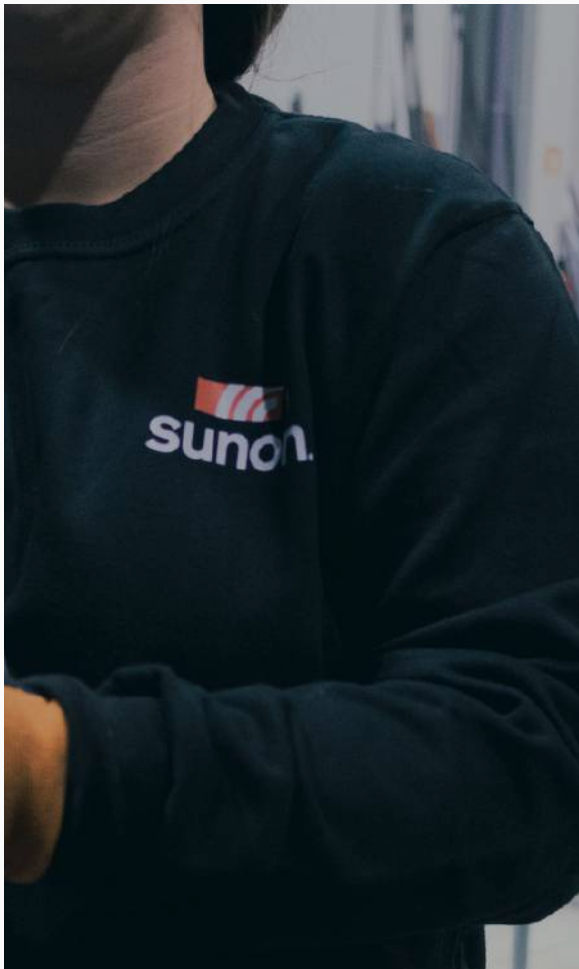


ENGLISH

WHY SUNON BLINDS?

More than 25 years ago, Sunon was born, a company formed by experienced staff focused on the sector since 1993. We stand out for the wide range of solutions we can offer you. Sunon has professional collaborators from different sectors, such as architects, engineers, window manufacturers, curtain wall manufacturers, and builders that provide accurate systems for the execution of the project; for this reason, the company is recognized for the quality of their

work. We take care that in each project we eliminate any type of openings and gaps, in addition to providing both a high design facade, comfortable, energy-saving, and environmentally friendly. We are specialized in technical and adjustable shutter systems, with dynamic elements for residential sun protection, facades, security, and tunnel boxes, as well as motorization systems. We also take care of product manufacturing, distribution and installation.



CUSTODIA BULLETPROOF 6500

The Custodia Basic shutter model is designed to have minimal buckling in large widths and high resistance to mechanical perforation, vandalism or inertia due to extreme wind gusts mechanical perforation, vandalism or inertia due to extreme wind gusts.

CUSTODIA BASIC 6500

MAXIMUM RESIDENTIAL SECURITY

The Custodia Basic shutter model is designed to have minimal buckling in large widths and high resistance to mechanical perforation, vandalism, or inertia due to extreme wind gusts mechanical perforation, vandalism, or inertia due to extreme wind gusts.

Its arched shape, plus rib reinforcements with superior thickness in the joint areas and its interlocking design between slat and slat, achieves maximum dimensional stability with the minimum diameter and headroom space to fit in the retracted position.

Its hook design with no light slots, no ventilation, and minimal travel space to prevent the entry of sharp objects or tools, and their interlocking shapes between slats, increase the time and effort burglars need to gain access or force access to your home or business.

MOTORIZATION AND SENSORS

Depending on the dimensions, location, and passage areas, Sunon will require, according to European safety regulations, the installation of parachutes or sensors. All bidirectional radio systems from manufacturers such as Selve, Somfy, etc. are valid. Sunon in security systems recommends bus lines or mixed systems adaptable to KNX or open protocol.

OPTIONAL OR MANDATORY SAFETY DEVICES

Depending on the project, the use of parachute systems or photoelectric cells, or both, will be mandatory. The systems with higher safety contribution or better WK certification will be mandatory to install the type of guides, BBS device, and other details according to modulation or separation between blind and glass.

PHOTOGRAPHIES:



Modelo Custodia Basic color 9006

TECHNICAL MEMORY

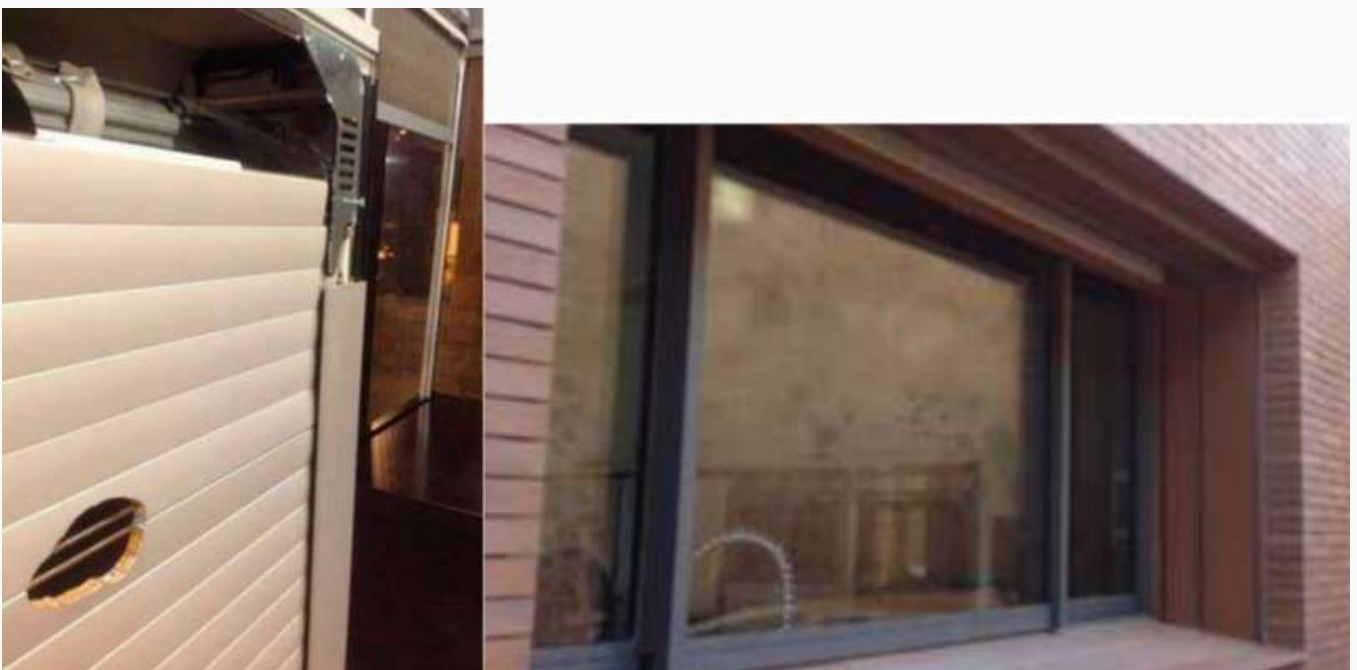
CUSTODY BASIC MODEL OF THE MAXIMUM RESIDENTIAL SECURITY SHUTTER SERIES.

Extruded aluminum rolling shutter with 6063 T5 alloys according to standard 573-3, composed of 26 slats per linear meter of the height of semi-curved profiles of 39x14x1.30mm with reinforcements in 1.55mm in support ribs. Fixing mobility of the slats by means of metal plugs. Blade joints with the array axis through metallic self-locking fastening crowns.

BSS safety system with WK3 certificate.

Guides of different types with 15mm opening and a minimum depth of 25mm. 70x1.5mm or 100x3mm shafts with adjustable capsules. Mechanical tubular motors or with electronic limit switches, with powers suitable to the shaft measurements, and adaptable to Domotics and with output to sensors, presence, or other elements pre-established by Sunon technicians or authorized installers.

FOTOGRAFIES:



PROFILES

Extruded aluminum with high strength 6063 T5 alloy. Shape: semi-curved 39x14x1.3mm, joined by zipper system with reinforced hook and socket type male female.

TYPES OF GUIDES

It admits several typologies such as 50x30mm guide - 60x28x2mm guide, V25 type guide in small holes, according to widths, type of work and required resistance.

MAXIMUM MEASUREMENTS

Maximum manufacturing width 6400mm and maximum cubic capacity 18 m².

WEIGHT AND TYPES OF SHAFTS

Weight m² of 14,5k. minimum shaft 50mm oct. advisable shaft 70mm diameter. For widths over 300cm, 100x2mm shafts will be supplied. According to weights and widths, Sunon will manufacture the ideal shaft for your load.

CUSTODIA BASIC 6500

Architecturally, it allows covering large windows without having to split into two or more louvers, and aesthetically, due to its size and shape, it harmonizes perfectly with modern lines and despite its high robustness, its appearance does not attract attention and fits in all types of facades or majestic houses or with modern and large windows.

Possibly, at the residential housing level, it is currently, the model with the greatest capacity of width and resistance. As standard, it comes with the slats sewn and fixed by means of a system of metal plugs that reduce This reduces breakdowns and minimizes the maintenance that lower range models with plastic plugs usually have. Has WK3 safety certificate. Expandable according to optional accessories and modulation. Maximum manufacturing width, 6400 mm and maximum cubic capacity 18 m².

Weight per m² 14.5K.

TIPS AND WARNINGS

Burglars have easily learned to open the so-called self-closing shutters with a simple sheet of plastic foil, placing it in such a way that the small profiles do not get stuck in the guides.

The combination of different preparations in new constructions, such as example, the use of guides, connection of shutters to radar, alarms, and other details, make the overall system more efficient for the security of your home and your family. In windows where people pass through and depending on the weight of the shutters, it is necessary to install a parachute system or other security systems.

The average durability of these models is more than 30 years, which makes your investment not only safe but also profitable due to minimum maintenance and important reductions in theft insurance or surveillance expenses.

